

alpha automation

.com.au

General guideline for sliding gate installation

This guide does not take into account factors that may impact the measurements provided, please use as a reference and compare to your site.

Since 7th of June 2024 fasteners are supplied with MOST Gate + Automation Packages, you can check the supplied contents of any package by clicking the "kit contents tab" on the specific package. Individual hardware items or hardware packages are not supplied with the fixings however they are available to be purchased in packs. This guide is written around the basis of metal post & concrete strip footing IF you are working outside of this scope please substitute with the appropriate fasteners.

Masonry Anchor Nail



1m Section Length - 8x Knock Ins
 2m Section Length- 12x Knock Ins
 3m Section Length - 20x Knock Ins

Use Hammer Drive Masonry Anchor Nails
 M6 x 38mm SKU: KIN-6-38

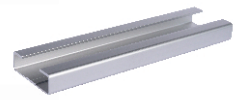
Metal Tek 6mm



2x screws



2x screws

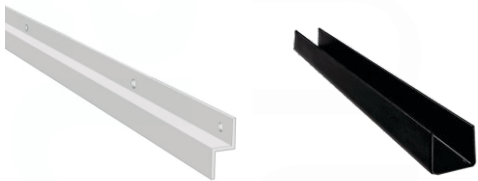


2x screws



Use Metal Tek Self Drilling Screw M6 x 25mm SKU: TEK-6-25mm

Self Drilling Metal Screw 4mm



1m Section Length - 4x Screws
 2m Section Length- 8x Screws
 3m Section Length - 11x Screws

3x screws

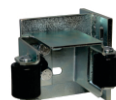


Use Metal Self Drilling Screw
 M4 x 19mm SKU: SD-4-19mm

Super Tek 8mm



2x screws



4x screws



2x screws



2x screws



4x screws



4x screws



2x screws



Use Super Tek Self Drilling Screw
 M8 x 40mm SKU: TEK-8-40mm

Dyna Bolt



NOT SUPPLIED
 Use M10 50mm Dynabolt
 (Available from Bunnings and Mitre 10)

Gate Wheel Deduction (Fabrication)

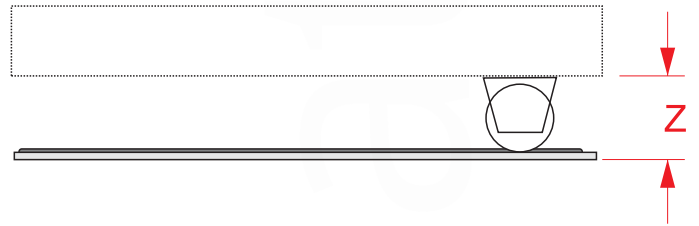
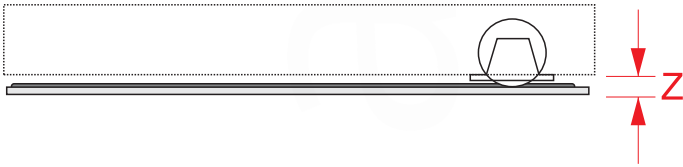
Z Is the deduction for fabrication (Bottom of gate tube to Concrete) Including track

Internal Recess Mount Wheel

SKU	Z
IRM-70	22mm
IRM-78	25mm
IRM-90	26mm
ESM-70	77mm
ESM-90	100mm

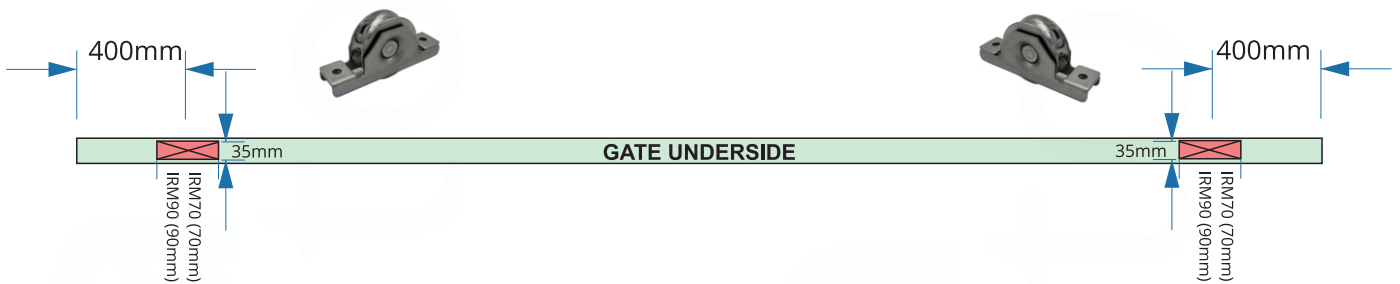
External Surface Mount Wheel

SKU	Z	
ESM-70	76mm	Use the Titan Riser System
ESM-90	96mm	Use the Titan Riser System



Gate Wheel Positioning and Cut Out

Internal Recess Mount Wheel



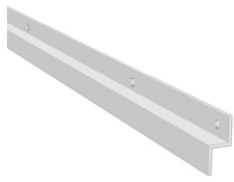
External Surface Mount Wheel



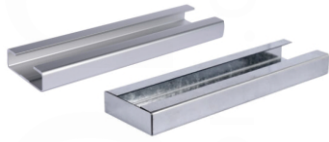
A sliding gate motor must be raised to accommodate the external wheel height, ensure the use of a riser system!

Part No: Titan-Riser

Gate System Installation (Z profile with Nylon Block Method)



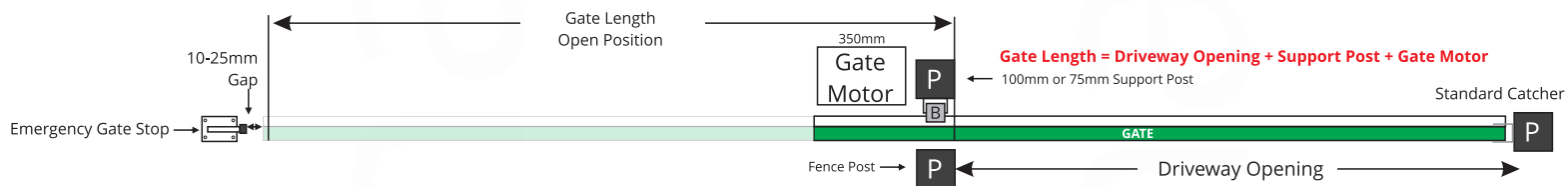
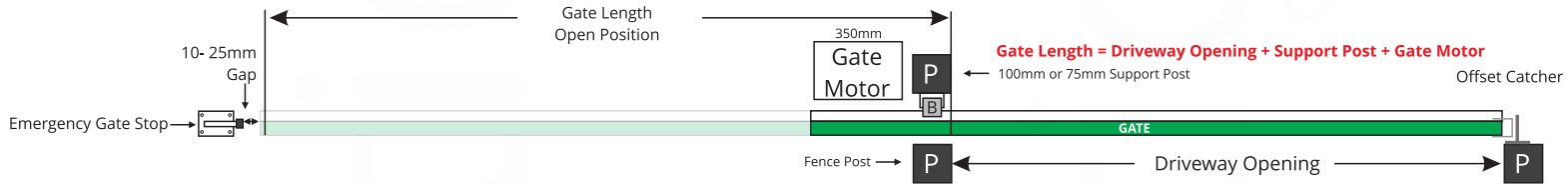
Z profile



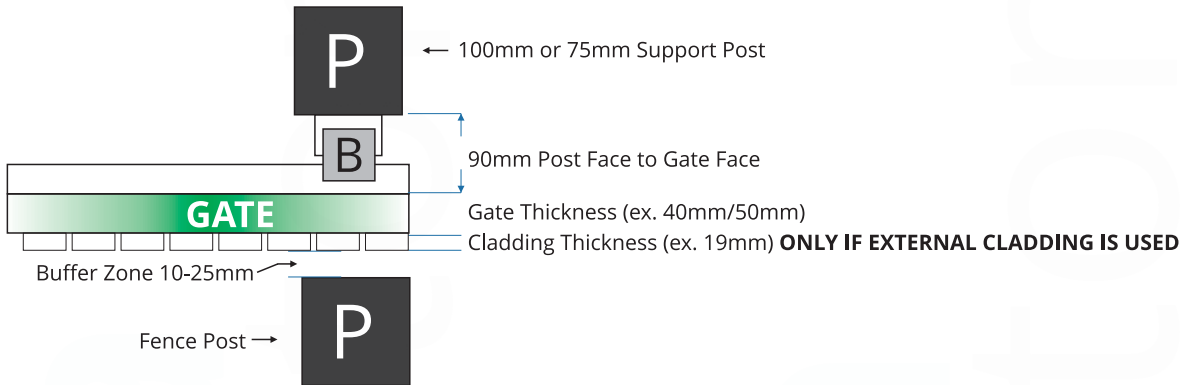
Aluminum and Steel C Channels



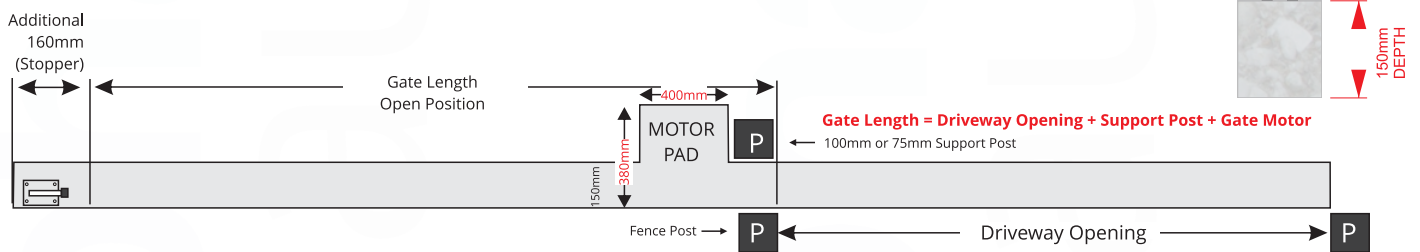
White and Black Guide Blocks



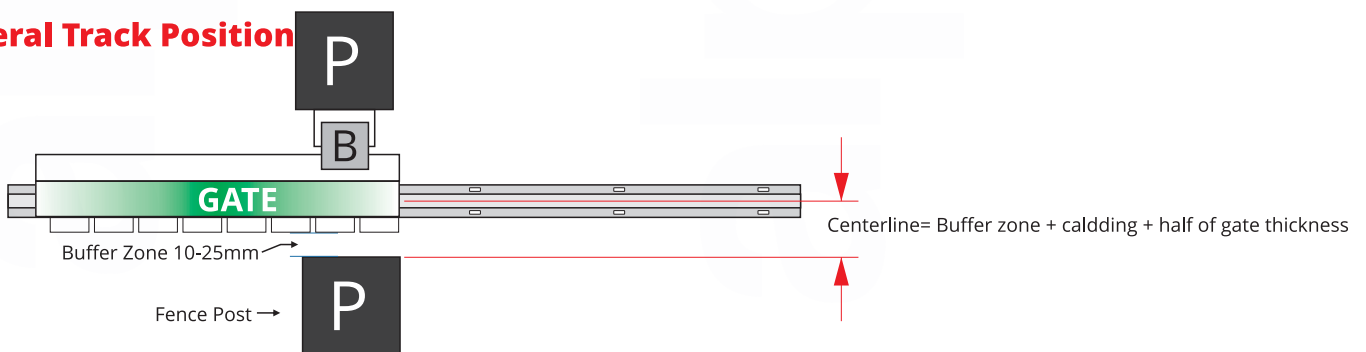
Support Post Positioning



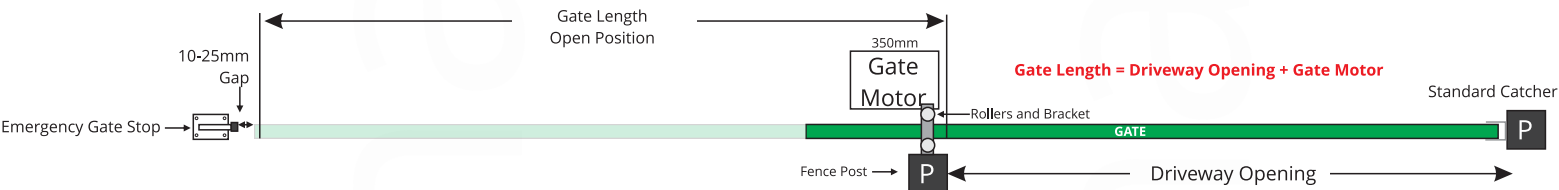
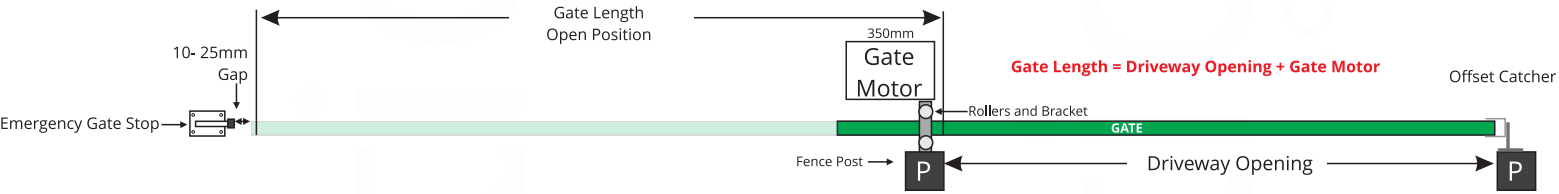
Concrete Guideline



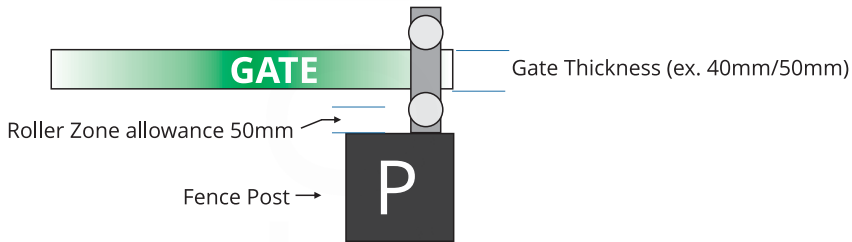
General Track Position



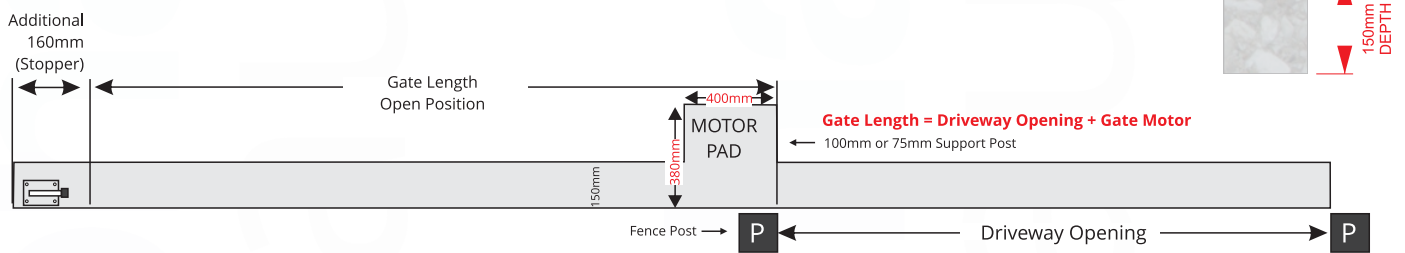
Gate System Installation (Roller and Bracket Method)



Support Post Positioning



Concrete Guideline



General Track Position

